

MODUL-SYSTEM

VAN RACKING ACCESSORIES PRODUCTS



RACKING ACCESSORIES



Grab handle

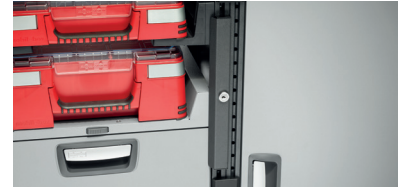
Art. No.	Dimensions (W x D x H)	Weight (kg)
50014-03	221x34x121	0.4
50015-03 ¹	221x34x121	0.4

¹ Yellow handle



Load stop

Art. No.	Dimensions (W x D x H)	Weight (kg)
50250-03	120x138x218	0.4



Modul-Lock

Art. No.	Dimensions (W x D x H)	Weight (kg)
50211-03 ¹	37x20x312	0.4
50212-03 ²	37x25x312	0.4
50213-03 ¹	37x20x103	0.1
50214-03 ²	37x25x103	0.1

¹ Cam lock version

² Padlock version (padlock not included)



Hose holder

Art. No.	Dimensions (W x D x H)	Weight (kg)
11866	324x130x165	1.3
11867	486x170x195	2.0



1

2

Bottle holder

Art. No.	Dimensions (W x D x H)	Weight (kg)
50861-03 ¹	324x50x50	1.0
50862-03 ¹	486x50x50	1.3
50863-03 ²	324x50x50	1.1

¹ Strap length 2.2 m

² Integrated lashing strap



1

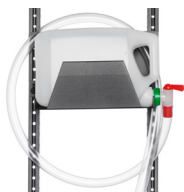
2

Bottle holder

Art. No.	Dimensions (W x D x H)	Weight (kg)
50864-03 ¹	324x130x165	0.7
50865-03 ²	324x81x132	0.8

¹ Silicone tube holder: for bottles with a maximum diameter of 50 mm

² Spray bottle holder: for bottles with a maximum diameter of 70 mm



Water dispenser

Art. No.	Dimensions (W x D x H)	Weight (kg)
50050-03 ¹	350x130x192	1.5
50051-03 ²	350x198x245	2.8
50055-03 ³	1500x26x26	0.3

¹ 5L version

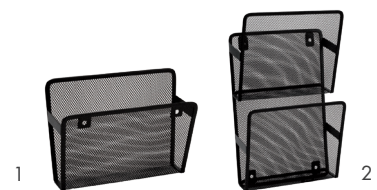
² 10L version

³ Hose for water dispenser



Mesh basket

Art. No.	Dimensions (W x D x H)	Weight (kg)
50013-03	161x290x291	0.8



1

2

Form holder

Art. No.	Dimensions (W x D x H)	Weight (kg)
50008-03 ¹	105x250x195	0.3
50009-03 ²	120x241x478	0.9

¹ Form holder, single

² Form holder, double

CASES & BOXES



Mobil-Box, low

Art. No.	Dimensions (W x D x H)	Weight (kg)
10564	539x326x79	2.3
10566 ¹	343x326x79	1.6

¹ For use with 50230-03



Mobil-Box, medium height

Art. No.	Dimensions (W x D x H)	Weight (kg)
10563	343x326x132	1.9
10565	539x326x132	2.6

Movable dividers



Storage holder for Mobil-Box

Art. No.	Dimensions (W x D x H)	Weight (kg)
50230-03	486x324x96	1.7

For use with 10566



20 drawer inserts for low Mobil-Box

Art. No.	Dimensions (W x D x H)	Weight (kg)
10568	60x55x67	0.6



Modul-Box, 162 mm wide

Art. No.	Dimensions (W x D x H)	Weight (kg)
10479-03 ¹	162x216x170	0.4
10480-03 ¹	162x324x170	0.5
10481-03 ¹	162x486x170	0.7
10482-03 ²	162x6x162	0.1
10483-03 ³	162x35x85	0.1

¹ Modul-Box
² Divider
³ Window



Modul-Box, 324 mm wide

Art. No.	Dimensions (W x D x H)	Weight (kg)
10487-03 ¹	324x324x170	0.9
10488-03 ²	324x6x162	0.2
10489-03 ³	324x35x95	0.1
10490-03 ⁴	324x20x160	0.1

¹ Modul-Box
² Divider
³ Window
⁴ Handle



Mobile office

Art. No.	Dimensions (W x D x H)	Weight (kg)
19714	510x370x275	3.6

Placed on passenger seat, held in place with seat belt



Combination table KB1

Art. No.	Dimensions (W x D x H)	Weight (kg)
19740	180x408x370	6.9

Fitted between the driver and passenger seats



Combination table KB2

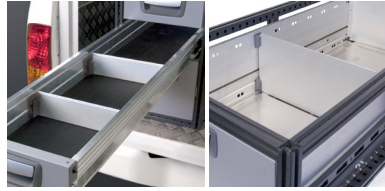
Art. No.	Dimensions (W x D x H)	Weight (kg)
98093-03	360x407x620	19.0

DIVIDERS & INSERTS



Divider for drawer

Art. No.	Dimensions (W x D x H)	Weight (kg)
50231-03	3.5x324x65	0.2
50232-03	3.5x486x65	0.3
50233-03	3.5x648x65	0.3

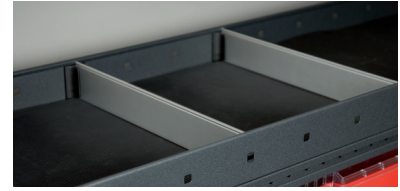


Divider for extra-long drawer

Art. No.	Dimensions (W x D x H)	Weight (kg)
12118-03 ¹	324x3.5x65	0.1
12119-03 ¹	486x3.5x65	0.2
12120-03 ¹	648x3.5x65	0.3
51290-03 ²	324x21x190	0.4
51291-03 ²	486x21x190	0.7
51292-03 ²	648x21x190	0.9

¹ Drawer divider in aluminum

² High drawer divider in steel



Divider for standard shelf

Art. No.	Dimensions (W x D x H)	Weight (kg)
50241-03	3.5x216x54	0.1
50242-03	3.5x324x54	0.1
50243-03	3.5x486x54	0.2
50244-03	3.5x648x54	0.2



Drawer insert kit, 108 mm high drawer

Art. No.	Dimensions (W x D x H)	Weight (kg)
51330-03	324x324x108	0.4
51331-03	486x324x108	0.7
51332-03	648x324x108	1.0
51333-03	972x324x108	1.6
51335-03	324x486x108	0.8
51336-03	486x486x108	1.3
51337-03	648x486x108	1.8
51338-03	972x486x108	2.8



Drawer insert kit,
162 mm/216 mm high drawer

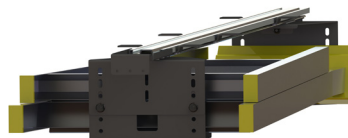
Art. No.	Dimensions (W x D x H)	Weight (kg)
51345-03	324x324x162	0.6
51346-03	486x324x162	1.0
51347-03	648x324x162	1.4
51348-03	972x324x162	2.2
51350-03	324x486x162	1.1
51351-03	486x486x162	1.8
51352-03	648x486x162	2.5
51353-03	972x486x162	3.9



Modul-Insert

Art. No.	Dimensions (W x D x H)	Weight (kg)
12127-03	486x324x72	0.6

LADDER HOLDERS



Internal ladder holder

Art. No.	Dimensions (W x D x H)	Weight (kg)
11800-03	250x2280x260	8.3

Ladder not included

LOAD RESTRAINT



Lashing eyelet for T-track

Art. No.	Dimensions (W x D x H)	Weight (kg)
50025-03	25x90x22	0.2

Load capacity: 500 kg



Lashing hook for T-Track

Art. No.	Dimensions (W x D x H)	Weight (kg)
50024-03	25x95x35	0.2

Load capacity: 500 kg



Lashing straps are available in a variety of lengths and load capacities.



Lashing strap 0.8 - 4.0 m

Art. No.	Dimensions (W x H)	Weight (kg)
11710	25x800	0.1
11711	25x1200	0.1
11712	25x2000	0.1
11714	25x4000	0.1

Lashing strength 250 kg (LC 125 daN)



Lashing with J-hooks 2.0 m

Art. No.	Dimensions (W x H)	Weight (kg)
11713	25x2000	0.2

Lashing strength 250 kg (LC 125 daN)



Lashing with ratchet 4.5 m

Art. No.	Dimensions (W x H)	Weight (kg)
11715	25x4500	0.5

Lashing strength 1200 kg (LC 600 daN)



Lashing with ratchet and J-hooks 4.5 m

Art. No.	Dimensions (W x H)	Weight (kg)
11716	25x4500	0.6

Lashing strength 1200 kg (LC 600 daN)

2 x



Lashing strap with small ratchet, S-hooks and narrow strap 2.0 m

Art. No.	Dimensions (W x H)	Weight (kg)
11722	18x2000	0.4

Lashing strength 300 kg (LC 150 daN)

Pack of 2



Rubber strap

Art. No.	Dimensions (W x D x H)	Weight (kg)
10912	270x8x28	0.04
10909 ¹	1000x8x28	0.2

¹ Sold by the metre.

TOOL HOLDERS



Tool holder set 915, 15 pcs

Art. No.	Dimensions (W x D x H)	Weight (kg)
10848	-	0.9



Tool holder set 930, 30 pcs

Art. No.	Dimensions (W x D x H)	Weight (kg)
10849	-	2.0



Tool holder set 950, 50 pcs

Art. No.	Dimensions (W x D x H)	Weight (kg)
10850	-	3.5

5 x

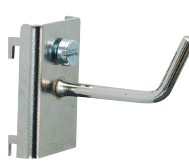


Type 1

Art. No.	Dimensions (W x D x H)	Weight (kg)
10800	32x10x15	0.2
10801	32x20x20	0.2

Pack of 5

5 x



Type 2

Art. No.	Dimensions (W x D x H)	Weight (kg)
10802	32x20x20	0.2
10803	32x35x20	0.3
10804	32x50x25	0.3

Pack of 5

5 x



Type 3

Art. No.	Dimensions (W x D x H)	Weight (kg)
10805	32x60x40	0.4
10806	32x100x40	0.5
10807	32x140x40	0.8

Pack of 5

5 x



Type 4

Art. No.	Dimensions (W x D x H)	Weight (kg)
10808	32x40x30	0.4
10809	32x60x40	0.4
10810	32x80x50	0.7

Pack of 5

5 x



Type 5

Art. No.	Dimensions (W x D x H)	Weight (kg)
10812	40x35x30	0.3
10813	50x50x30	0.4

Pack of 5

5 x



Type 6

Art. No.	Dimensions (W x D x H)	Weight (kg)
10814	32x20x30	0.3

Pack of 5

5 x



Type 7

Art. No.	Dimensions (W x H)	Weight (kg)
10817 ¹	32x15	0.2
10818 ²	32x15	0.3
10819 ³	32x15	0.3

Pack of 5

¹ Grip range 16-25 mm

² Grip range 25-35 mm

³ Grip range 30-50 mm



Type 8 - Suitable for spray cans

Art. No.	Dimensions (W x D x H)	Weight (kg)
10821	32x100x80	0.2

Int. diam 85 mm

5 x



Type 9 - Intended for lashing to tool boards

Art. No.	Dimensions (W x D x H)	Weight (kg)
10822	45x10x5	0.3

Pack of 5



Type 11

Art. No.	Dimensions (W x D x H)	Weight (kg)
10824	76x46x40	0.1

Hole width 10 mm



Type 15

Art. No.	Dimensions (W x D x H)	Weight (kg)
10831	70x150x45	0.2

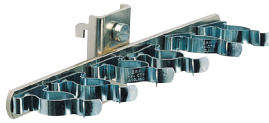
5 x



Type 16

Art. No.	Dimensions (W x D x H)	Weight (kg)
10832	35x40x15	0.3
10833	60x60x15	0.4
10834	85x85x15	0.5

Pack of 5



Type 18

Art. No.	Dimensions (W x D x H)	Weight (kg)
10837	190x40x54	0.1

Grip range 16-25 mm



Type 19

Art. No.	Dimensions (W x D x H)	Weight (kg)
10838	190x50x54	0.1

Grip range 25-35 mm

POWER INVERTERS



Power inverter 400W

Art. No.	Dimensions (W x D x H)	Weight (kg)
21040-03	218x152x66	1.1



Power inverter 600W

Art. No.	Dimensions (W x D x H)	Weight (kg)
21060-03	237x175x89	2.0



Power inverter 1000W

Art. No.	Dimensions (W x D x H)	Weight (kg)
21100-03	320x175x87	2.7



Power inverter 2000W

Art. No.	Dimensions (W x D x H)	Weight (kg)
21200-03	414x230x110	5.2



Power inverter 3000W

Art. No.	Dimensions (W x D x H)	Weight (kg)
21300-03	539x230x115	7.0



MODUL-SYSTEM

MODUL-FORM

MULTI-BOX



Multi-Box with lid

Art. No.	Dimensions (W x D x H)	Weight (kg)
10517-032	449x338x254	2.7



Multi-Box

Art. No.	Dimensions (W x D x H)	Weight (kg)
10517-03	449x338x200	1.4



Lid, Multi-Box

Art. No.	Dimensions (W x D x H)	Weight (kg)
10520-03	449x338x54	1.3



Stacking clips, Multi-Box (2 pcs)

Art. No.	Dimensions (W x D x H)	Weight (kg)
10521-03	61x10x41	0.01



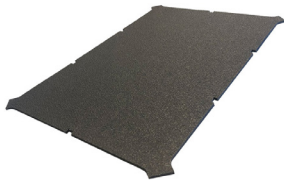
Longitudinal divider, Multi-Box

Art. No.	Dimensions (W x D x H)	Weight (kg)
10522-03	393x4x65	0.24



Transverse divider, Multi-Box

Art. No.	Dimensions (W x D x H)	Weight (kg)
10523-03	4x267x65	0.16



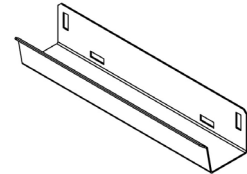
Foam insert, Multi-Box

Art. No.	Dimensions (W x D x H)	Weight (kg)
10524-03	413x295x4	0.01



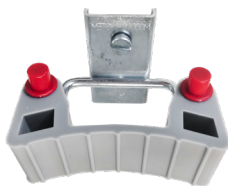
Trolley, Multi-Box

Art. No.	Dimensions (W x D x H)	Weight (kg)
10527-03	486x530x1070	5.2



Trolley bracket

Art. No.	Dimensions (W x D x H)	Weight (kg)
10528-03	324x60x63	0.7



Tool holder - For tool board

Art. No.	Dimensions (W x D x H)	Weight (kg)
10845	70x76x54	0.1

Suitable to hold the Multi-Box trolley.



Tool holder - For Modul-Rail

Art. No.	Dimensions (W x D x H)	Weight (kg)
10846	72x60x40	0.05

Suitable to hold the Multi-Box trolley.

ROOF RACKS AND BARS



Roof bar, 2 bars

Art. No.	Vehicle model	Dimensions (W)	Weight (kg)
RR020023001	Berlingo/Partner/Combo 19- L1-L2	1350	4.7
RR030025000	Expert/Jumpy/ProAce 16-/Vivaro 19-	1500	5.2
RR090123000	Combo 08-18/Doblò 10- H1	1350	4.8
RR160023000	Connect 14-	1350	4.8
RR170125000	Custom H1	1500	5.1
RR180627000	Transit 14- L2-L4 H2/H3	1750	5.6
RR220023000	Citan/Kangoo 12-	1350	4.6
RR230025000	Vito 14-	1500	5.1
RR240527000	Sprinter H1/H2	1500	5.7
RR290023000	NV200 10-	1350	4.6
RR300525000	Master/Movano/NV400 H1/H2	1500	6.8
RR440125000	Trafic/Vivaro/Talento/NV300 H1	1500	5.2
RR570023000	Caddy/Caddy Maxi	1350	4.6
RR580125000	Transporter T6 H1	1500	5.1



Roof bar, 3 bars

Art. No.	Vehicle model	Dimensions (W)	Weight (kg)
RR020033011	Berlingo/Partner/Combo 19- L1-L2	1350	6.9
RR030035000	Expert/Jumpy/ProAce 16-/Vivaro 19-	1500	7.9
RR090133000	Combo 08-18/Doblò 10- H1	1350	7.1
RR162033000	Connect 14- L2	1350	7.1
RR170135000	Custom H1	1500	7.5
RR180637000	Transit 14- L2-L4 H2/H3	1750	8.3
RR223033000	Citan/Kangoo 12- L3	1350	6.9
RR230035000	Vito 14-	1500	7.5
RR240537000	Sprinter H1/H2	1500	8.5
RR290033000	NV200 10-	1350	6.9
RR300535000	Master/Movano/NV400 H1/H2	1500	10.3
RR440135000	Trafic/Vivaro/Talento/NV300 H1	1500	7.7
RR570033000	Caddy/Caddy Maxi	1350	7.0
RR582135000	Transporter T6 H1	1500	7.6
RR590637000	Crafter/TGE H2/H3	1750	8.3



Roof bar, 4 bars

Art. No.	Vehicle model	Dimensions (W)	Weight (kg)
RR161043000	Connect 14- L1	1350	9.4
RR188647000	Transit 14- L3-L4 H2/H3	1750	11.6
RR240547000	Sprinter L2-L4 H1/H2	1500	11.3
RR300545000	Master/Movano/NV400 H1/H2	1500	13.6
RR572043000	Caddy Maxi	1350	9.3
RR580145000	Transporter T6 H1	1500	10.1
RR590647000	Crafter/TGE H2/H3	1750	11.1



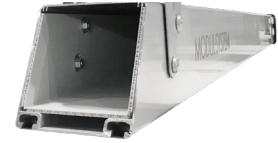
Roof bar, 5 bars

Art. No.	Vehicle model	Dimensions (W)	Weight (kg)
RR184357000	Transit 14- L4 H3	1750	13.8
RR240557000	Sprinter L3-L4 H1/H2	1500	14.2
RR590657000	Crafter/TGE H2/H3	1750	13.8



Pipe carrier

Art. No.	Dimensions (W x D x H)	Weight (kg)
27020-03	150x2500x162	12.9
27030-03	150x3500x162	16.5
27040-03	150x4500x162	20.1



Pipe carrier liner

Art. No.	Dimensions (W x D x H)	Weight (kg)
27021-03	124x2275x104	1.0
27031-03	124x3275x104	1.5



Side load stops, 1 pair

Art. No.	Dimensions (W x D x H)	Weight (kg)
27055-03	45x60x160	0.4



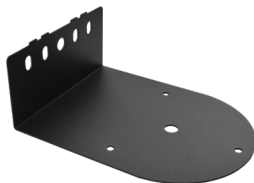
Lashing eyelet with knob M8

Art. No.	Dimensions (W x D x H)	Weight (kg)
27080-03	51x11x52	0.2



Lashing hook with knob M8

Art. No.	Dimensions (W x D x H)	Weight (kg)
27081-03	51x30x62	0.2



Beacon bracket for bar

Art. No.	Dimensions (W x D x H)	Weight (kg)
27125-03	155x203x37	0.56
27130-03	155x203x76	0.64
27135-03	155x203x116	0.72



Light bar bracket

Art. No.	Dimensions (W x D x H)	Weight (kg)
27150-03 ¹	210x155x30	0.71
27151-03 ²	210x172.5x47	0.81
27160-03	210x155x47	0.69
27165-03	210x155x57	0.72
27170-03	210x155x67	0.85
27175-03	210x155x77	0.97

¹ For OEM fix points

² For OEM fix points Jumpy/Expert/Proace



Strobe light bracket for bar

Art. No.	Dimensions (W x D x H)	Weight (kg)
27140-03	30x133x40	0.1

Visit our website to view
the complete accessories range

MODUL-SYSTEM
www.modul-system.com